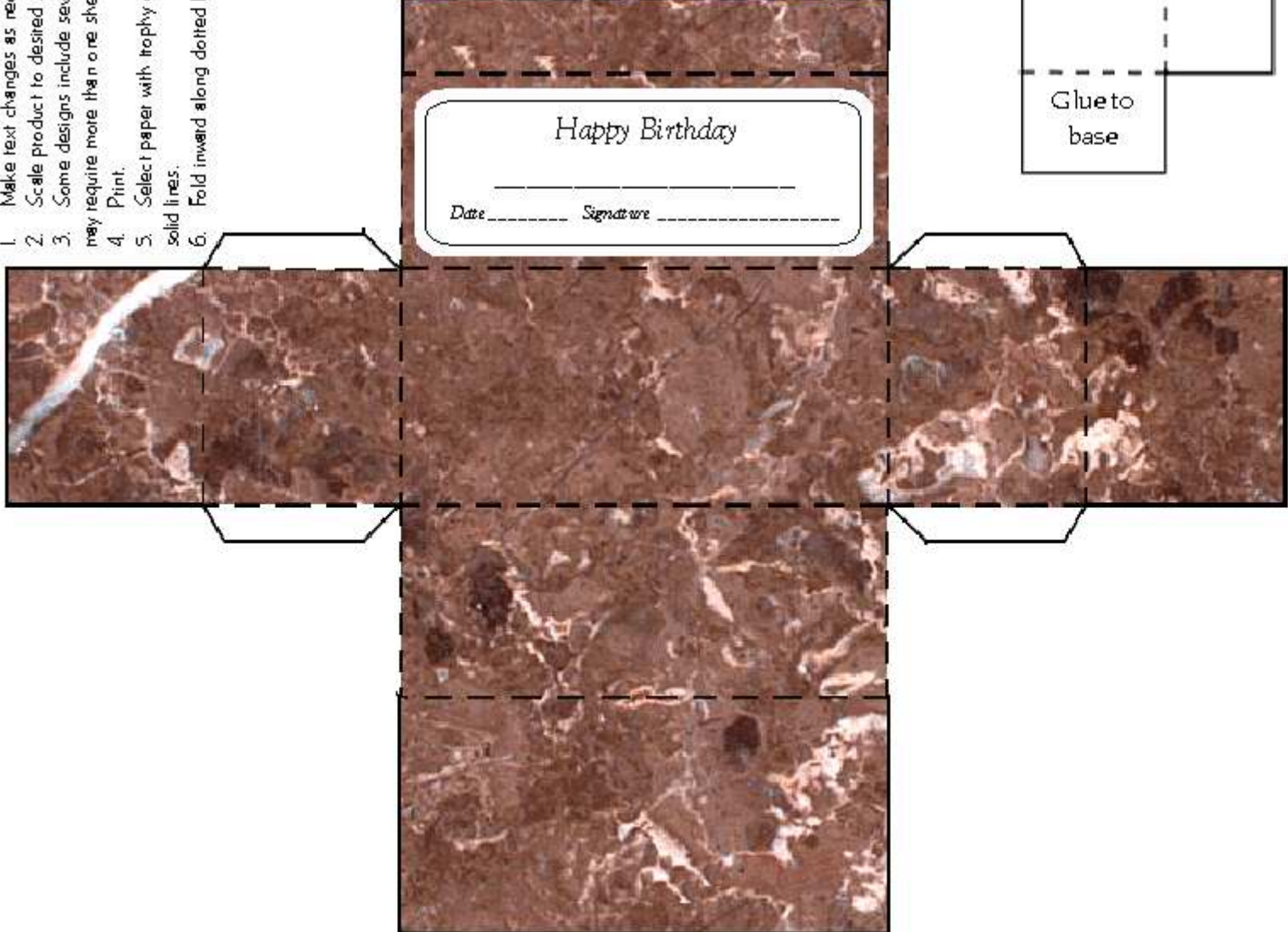


- box-shaped tray that sits behind trophy. Glue tabs to secure.
- 7. Take support piece from sheet with trophy design, fold along dotted lines and glue small tab to base and long tab to back of trophy.
- 8. See manual for additional decorating suggestions.

- 1. Make text changes as necessary.
- 2. Scale product to desired size.
- 3. Some designs include several elements which may require more than one sheet.
- 4. Print.
- 5. Select paper with trophy design and cut along solid lines.
- 6. Fold inward along dotted lines to create



*Happy Birthday*

---

Date \_\_\_\_\_ Signature \_\_\_\_\_

Glue to base

---

Glue on back of trophy